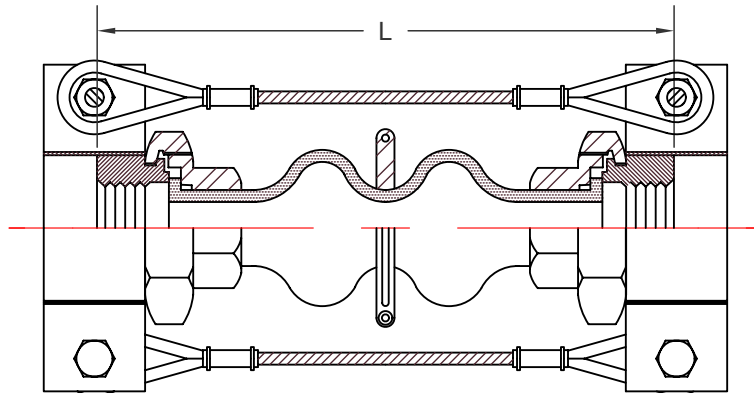
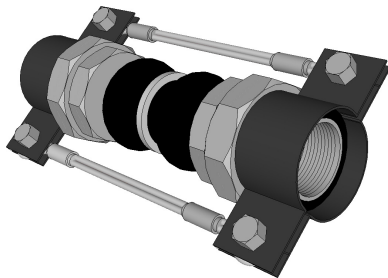


# KINFLEX MODEL UTC FLEXIBLE CONNECTOR

| KINFLEX UTC, FLEXIBLE CONNECTOR SPECIFICATIONS |      |          |       |             |      |            |     |                     |      |                    |     |               |      |           |     |              |  |
|--|------|----------|-------|-------------|------|------------|-----|---------------------|------|--------------------|-----|---------------|------|-----------|-----|--------------|--|
| NOM SIZE                                       |      | LENGTH-L |       | AXIAL       |      |            |     | TRANSVERSE MOVEMENT |      | ANGULAR DEFLECTION |     | MAX. PRESSURE |      | WEIGHT    |     |              |  |
|  |      |          |       | COMPRESSION |      | ELONGATION |     |                     |      |                    |     |               |      | CONNECTOR |     | CONTROL RODS |  |
| 0.75   | (19) | 8.00     | (203) | 0.88        | (22) | 0.25       | (6) | 0.88                | (22) | 32                 | 150 | (10.3)        | 2.5  | (1.1)     | 2.0 | (0.9)        |  |
| 1.00   | (25) | 8.00     | (203) | 0.88        | (22) | 0.25       | (6) | 0.88                | (22) | 25                 | 150 | (10.3)        | 3.2  | (1.5)     | 2.0 | (0.9)        |  |
| 1.25   | (32) | 8.00     | (203) | 0.88        | (22) | 0.25       | (6) | 0.88                | (22) | 21                 | 150 | (10.3)        | 4.0  | (1.8)     | 2.0 | (0.9)        |  |
| 1.50   | (38) | 8.00     | (203) | 0.88        | (22) | 0.25       | (6) | 0.88                | (22) | 17                 | 150 | (10.3)        | 5.1  | (2.3)     | 3.0 | (1.4)        |  |
| 2.00   | (51) | 8.00     | (203) | 0.88        | (22) | 0.25       | (6) | 0.88                | (22) | 13                 | 150 | (10.3)        | 7.4  | (3.4)     | 3.0 | (1.4)        |  |
| 2.50   | (64) | 8.00     | (203) | 0.88        | (22) | 0.25       | (6) | 0.88                | (22) | 11                 | 150 | (10.3)        | 11.6 | (5.3)     | 3.0 | (1.4)        |  |
| 3.00   | (76) | 8.00     | (203) | 0.88        | (22) | 0.25       | (6) | 0.88                | (22) | 9                  | 150 | (10.3)        | 13.4 | (6.1)     | 3.0 | (1.4)        |  |
|  |      |          |       |             |      |            |     |                     |      | DEG.               | PSI | (BAR)         | LB   | (KG)      | LB  | (KG)         |  |



**KINFLEX UTC**

**WARNING:** CONTROL UNITS MUST BE USED TO PROTECT THIS PART FROM EXCESSIVE MOVEMENT IF PIPING IS NOT PROPERLY ANCHORED.

ALL DIMENSIONS IN INCHES (MM) EXCEPT AS NOTED.

NEGATIVE PRESSURE RATING FOR ALL SIZES: 26" (660) HG  
 TEMPERATURE FOR RATED PRESSURE:  
 170 DEG F (77 DEG C)  
 MAX ALLOWABLE TEMPERATURE:  
 240 DEG F (115 DEG C)  
 STANDARD END FITTING 250 PSI  
 FEMALE PIPE THREAD

**MATERIALS**

FITTINGS: DUCTILE IRON  
 BODY: NEOPRENE (STANDARD)  
 BODY CORD: NYLON TIRE CORD  
 OPTIONAL BODY MATERIALS AVAILABLE:  
 [EPDM, BUTYL, & NITRILE]

APPLICABLE FLUIDS FOR STANDARD BODY:  
 WATER, WARM WATER, SEAWATER,  
 WEAK  
 ACIDS, ALKALIES, COMPRESSED AIR, ETC.



|          |          |
|----------|----------|
| By:      | BB       |
| Date:    | 07/14/14 |
| Revised: | /        |

|             |             |
|-------------|-------------|
| Drawing No: | S-05.05-01C |
|-------------|-------------|