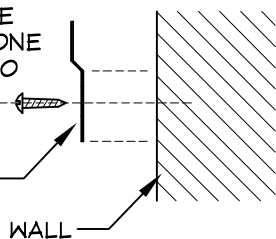


①

Z-CLIPS ARE SHIPPED LOOSE IN 2 PARTS - ONE FLAT PIECE TO BE SCREWED INTO THE WALL AND ONE PIECE WITH IMPALING PRONGS TO MOUNT INTO BACK OF PANEL

WALL MOUNTED Z-CLIP
PART # 1104005

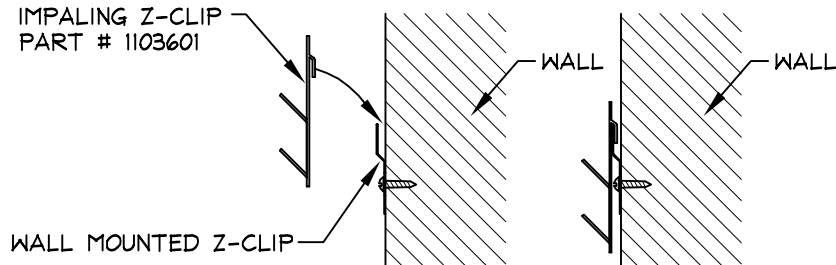


LOCATE "Z" CLIPS OR OPTIONAL "Z" BAR ON WALL AND SECURE WITH SCREWS APPROPRIATE FOR WALL SUBSTRATE.

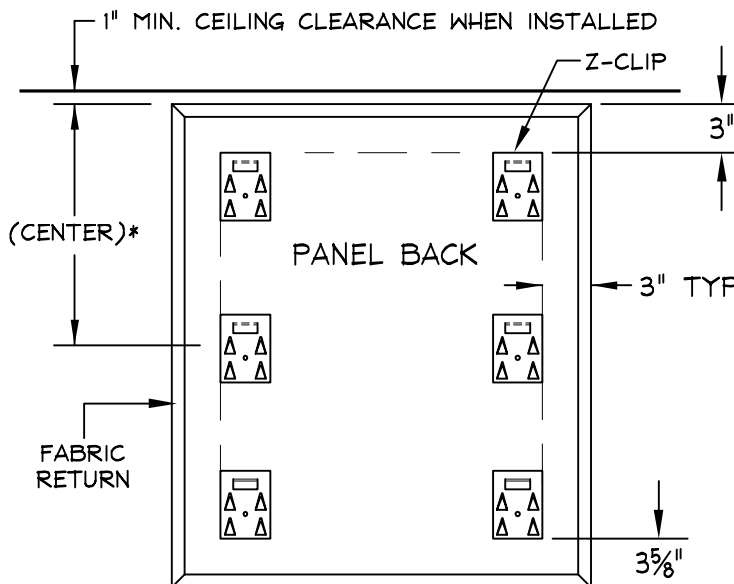
②

HANG IMPALING CLIP ON THE WALL-MOUNTED Z-CLIP

IMPALING Z-CLIP
PART # 1103601



OPTION: CONSTRUCTION ADHESIVE CAN BE PLACED ON IMPALING PRONGS

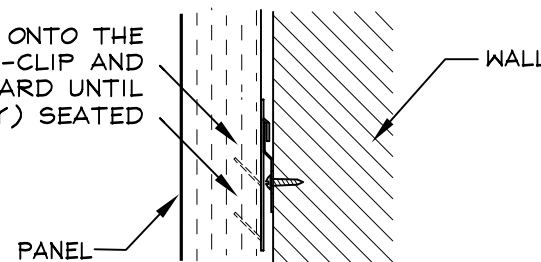


*-PANELS OVER 5' HIGH OR WIDE REQUIRE (6) "Z" CLIPS. SMALLER PANELS REQUIRE (4) "Z" CLIPS.

PANEL MOUNTED Z-CLIP PLACEMENT

③

PRESS PANELS ONTO THE IMPALING Z-CLIP AND PUSH DOWNWARD UNTIL (FIRMLY) SEATED



INSTALLED PANEL