

KINETICS™

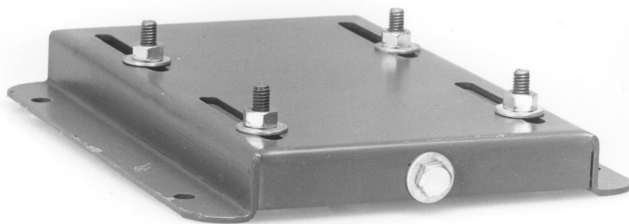
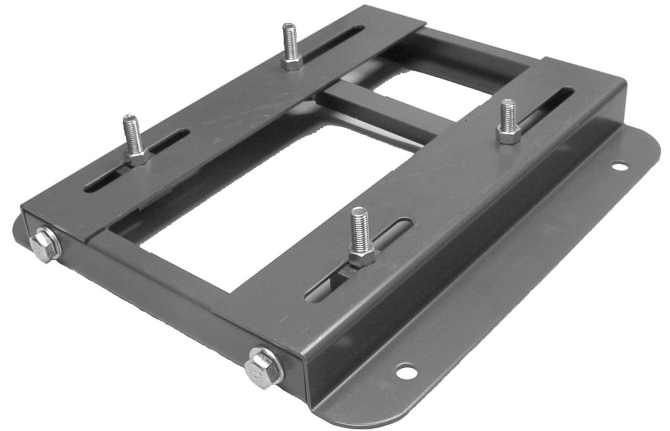
Adjustable Motor Slide Bases Model MSB

Description

Model MSB motor slide bases provide motor anchorage and position adjustment for use with fan-motor sets having belt and sheave connected drive apparatus, when mounted on Kinetics Model CIB-L, CIB-H, SFB, or KFB equipment bases.

Model MSB motor slide bases incorporate a single steel frame with four sliding motor anchor bolt, nut and washer assemblies, operate by one belt tension adjustment bolt, on tabulated base sizes up to 286, and two bolts for bases 324 through 445. All motor slide bases have four anchor bolt holes for attachment to supporting equipment bases.

Model MSB motor slide bases are superior to two-piece motor slide rails. Motor slide bases are more rigid than rail systems and assure that sliding motor anchor bolts are installed and remain parallel.

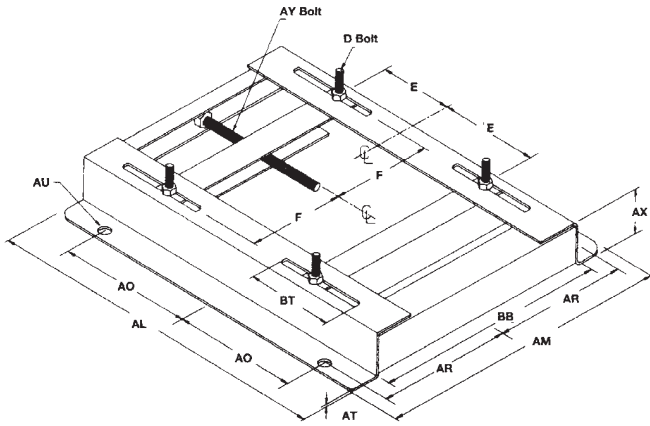


Application

Kinetics Model MSB motor slide bases are an accessory available for use with Model CIB-L, CIB-H, SFB, or KFB equipment bases.

Model MSB motor slide bases are rigidly bolted to prelocated and fixed anchor bolts in equipment bases and provide a means of anchoring motors and adjusting belt tension in belt-sheave connected drive systems.

Typical applications include use with fan-motor sets having NEMA or AMCA motor positions W, X, Y, or Z. Motor slide bases allow optimum motor adjustment for setting and adjusting belt tension to eliminate excessive belt and equipment bearing wear.



Specifications

Model MSB motor slide bases shall consist of a single frame steel motor mounting base and shall have four sliding motor anchor bolts, operated by one or two axis belt tension adjustment bolts, and shall have four anchor bolt holes for attachment to equipment support bases.

Motor slide bases, to be supported by concrete or steel frame bases used as part of the noise and vibration isolation of the equipment, shall be furnished by the same manufacturer as the equipment support bases and shall be sized as required for motors to be mounted.

NOTES

1. All motor slide bases are standard NEMA sizes.
2. Bases No. 56-286 have one adjustment bolt.
3. Bases No. 324-445 have two adjustment bolts.

Motor Frame No	English Units (Inches)											D Bolt Height	D Bolt	AY Bolt
	AL	AM	AX	BB	E	F	AO	AR	AU	BT	AT			
56	10 ¹ / ₂	6 ¹ / ₂	1 ¹ / ₈	4 ¹ / ₂	2 ⁷ / ₁₆	1 ¹ / ₂	3 ¹³ / ₁₆	2 ⁷ / ₈	3/8	3	0.078	⁷ / ₈	5/16 x 1	3/8 x 4
143	10 ¹ / ₂	7 ¹ / ₂	1 ¹ / ₈	5 ¹ / ₂	2 ³ / ₄	2	3 ³ / ₄	3 ³ / ₈	3/8	3	0.119	¹³ / ₁₆	5/16 x 1	3/8 x 4
145	10 ¹ / ₂	8 ¹ / ₂	1 ¹ / ₈	6 ¹ / ₂	2 ³ / ₄	2 ¹ / ₂	3 ³ / ₄	3 ⁷ / ₈	3/8	3	0.119	¹³ / ₁₆	5/16 x 1	3/8 x 4
182	12 ³ / ₄	9 ¹ / ₂	1 ¹ / ₂	6 ¹ / ₂	3 ³ / ₄	2 ¹ / ₄	4 ¹ / ₂	4 ¹ / ₄	1/2	3	0.134	1 ¹ / ₄	3/8 x 1 ¹ / ₂	1/2 x 6
184	12 ³ / ₄	10 ¹ / ₂	1 ¹ / ₂	7 ¹ / ₂	3 ³ / ₄	2 ³ / ₄	4 ¹ / ₂	4 ³ / ₄	1/2	3	0.134	1 ¹ / ₄	3/8 x 1 ¹ / ₂	1/2 x 6
213	15	11	1 ³ / ₄	7 ¹ / ₂	4 ¹ / ₄	2 ³ / ₄	5 ¹ / ₄	4 ³ / ₄	1/2	3 ¹ / ₂	0.164	1 ¹ / ₄	3/8 x 1 ¹ / ₂	1/2 x 6
215	15	12 ¹ / ₂	1 ³ / ₄	9	4 ¹ / ₄	3 ¹ / ₂	5 ¹ / ₄	5 ¹ / ₂	1/2	3 ¹ / ₂	0.164	1 ¹ / ₄	3/8 x 1 ¹ / ₂	1/2 x 6
254	17 ³ / ₄	15 ¹ / ₈	2	10 ³ / ₄	5	4 ¹ / ₈	6 ¹ / ₄	6 ⁵ / ₈	5/8	4	3/16	¹⁷ / ₁₆	1/2 x 1 ³ / ₄	5/8 x 6 ¹ / ₂
256	17 ³ / ₄	16 ⁷ / ₈	2	12 ¹ / ₂	5	5	6 ¹ / ₄	7 ¹ / ₂	5/8	4	3/16	¹⁷ / ₁₆	1/2 x 1 ³ / ₄	5/8 x 6 ¹ / ₂
284	19 ³ / ₄	16 ⁷ / ₈	2	12 ¹ / ₂	5 ¹ / ₂	4 ³ / ₄	7	7 ¹ / ₂	5/8	4 ¹ / ₂	3/16	¹⁷ / ₁₆	1/2 x 2	5/8 x 6 ¹ / ₂
286	19 ³ / ₄	18 ³ / ₈	2	14	5 ¹ / ₂	5 ¹ / ₂	7	8 ¹ / ₄	5/8	4 ¹ / ₂	3/16	¹⁷ / ₁₆	1/2 x 2	5/8 x 6 ¹ / ₂
*324	22 ³ / ₄	19 ¹ / ₄	2 ¹ / ₂	14	6 ¹ / ₄	5 ¹ / ₄	8	8 ¹ / ₂	3/4	5 ³ / ₄	3/16	² / ₃	5/8 x 2 ¹ / ₂	3/4 x 9
*326	22 ³ / ₄	20 ³ / ₄	2 ¹ / ₂	16 ¹ / ₂	6 ¹ / ₄	6	8	9 ¹ / ₄	3/4	5 ³ / ₄	3/16	² / ₃	5/8 x 2 ¹ / ₂	3/4 x 9
*364	25 ¹ / ₂	20 ¹ / ₂	2 ¹ / ₂	15 ¹ / ₂	7	5 ⁵ / ₈	9	9 ¹ / ₈	3/4	6	1/4	² / ₁₆	5/8 x 2 ¹ / ₂	3/4 x 9
*365	25 ¹ / ₂	21 ¹ / ₂	2 ¹ / ₂	16 ¹ / ₂	7	6 ¹ / ₈	9	9 ⁵ / ₈	3/4	6	1/4	² / ₁₆	5/8 x 2 ¹ / ₂	3/4 x 9
*404	28 ³ / ₄	22 ³ / ₈	3	16 ¹ / ₂	8	6 ¹ / ₈	10	9 ⁷ / ₈	7/8	7	1/4	2 ¹ / ₂	3/4 x 3	3/4 x 11
*405	28 ³ / ₄	23 ⁷ / ₈	3	18	8	6 ⁷ / ₈	10	10 ⁵ / ₈	7/8	7	1/4	2 ¹ / ₂	3/4 x 3	3/4 x 11
*444	31 ¹ / ₄	24 ⁵ / ₈	3	19 ¹ / ₄	9	7 ¹ / ₄	11	11	7/8	7 ¹ / ₂	5/16	2 ¹ / ₂	3/4 x 3	3/4 x 11
*445	31 ¹ / ₄	26 ⁵ / ₈	3	21 ¹ / ₄	9	8 ¹ / ₄	11	12	7/8	7 ¹ / ₂	5/16	2 ¹ / ₂	3/4 x 3	3/4 x 11

*Bases have two adjustment bolts

Motor Frame No	Meter Units (mm)											D Bolt Height	D Bolt	AY Bolt
	AL	AM	AX	BB	E	F	AO	AR	AU	BT	AT			
56	270	165	29	114	62	38	97	73	10	75	2	22	7.9 x 25	9.5 x 100
143	267	190	29	140	70	50	95	86	10	75	3	21	7.9 x 25	9.5 x 100
145	267	216	29	165	70	63	95	98	10	75	3	21	7.9 x 25	9.5 x 100
182	324	241	38	165	95	57	114	108	13	75	3	32	9.5 x 38	12.7 x 152
184	324	267	38	190	95	70	114	121	13	75	3	32	9.5 x 38	12.7 x 152
213	381	279	44	190	108	70	133	121	13	89	4	32	9.5 x 38	12.7 x 152
215	381	317	44	229	108	89	133	140	13	89	4	32	9.5 x 38	12.7 x 152
254	451	384	50	273	127	105	159	168	16	100	4	36	12.7 x 44	15.9 x 165
256	451	428	50	317	127	127	159	190	16	100	4	36	12.7 x 44	15.9 x 165
284	502	428	50	317	140	121	178	190	16	114	4	43	12.7 x 44	15.9 x 165
286	502	467	50	356	140	140	178	210	16	114	4	43	12.7 x 44	15.9 x 165
*324	578	489	63	356	159	133	203	216	19	133	4	56	15.9 x 63	19.0 x 229
*326	578	527	63	394	159	152	203	235	19	133	4	56	15.9 x 63	19.0 x 229
*364	648	521	63	394	178	143	229	232	19	152	6	52	15.9 x 63	19.0 x 229
*365	648	546	63	419	178	155	229	244	19	152	6	52	15.9 x 63	19.0 x 229
*404	730	568	75	419	203	155	254	251	22	178	6	63	19.0 x 75	19.0 x 279
*405	730	606	75	457	203	175	254	270	22	178	6	63	19.0 x 75	19.0 x 279
*444	794	625	75	489	229	184	279	279	22	190	8	63	19.0 x 75	19.0 x 279
*445	794	676	75	540	229	210	279	305	22	190	8	63	19.0 x 75	19.0 x 279

*Bases have two adjustment bolts



kineticsnoise.com
sales@kineticsnoise.com
1-800-959-1229